

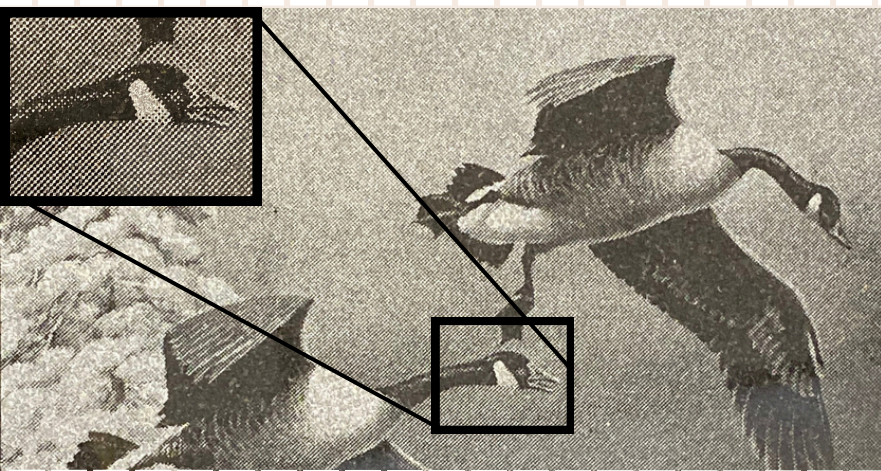
From Graphics To Grit

BEST PRACTICES WHEN CREATING ARTWORK FOR SANDCARVING

IKONICS IMAGING

★ QUALITY IS KEY ★

The quality of your digital artwork for sandcarving is crucial because it directly impacts the precision and clarity of the final etched design.

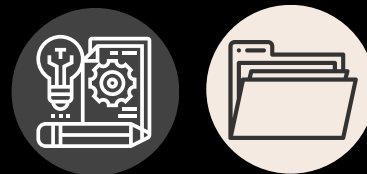


FILE FORMATS

Sandcarving graphics should be created as vector files (.AI, .SVG, .EPS, .PDF) because they use paths and can be scaled without losing quality.

Raster files (.JPEG, .PNG, .TIFF, .PSD) are resolution-dependent and made of pixels. They can become blurry when resized, leading to poor results during exposure and etching.

Vector designs ensure sharp, precise lines that transfer cleanly to photoresist or laser films, preserving the crispness of your artwork.



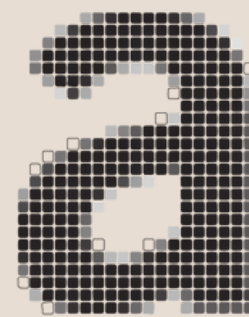
DESIGN PROGRAMS

Vector-based programs like Adobe Illustrator and CorelDRAW are ideal, offering precise control over scalable designs, line thickness, and halftones. Inkscape and Gravit are free alternatives with similar capabilities.

While Photoshop and other programs specializing in raster images are better suited for photo editing, they can be used to prepare images for vectorization, such as converting them into halftones or black-and-white designs.



VECTOR



RASTER

WORKING WITH HALFTONES

Find more detailed halftone guidelines in the FAQ section of our website!

When creating halftone patterns or photographs, convert images to grayscale first and adjust your image as needed for even contrast, then convert to Bitmap. Use a DPI of 300 or higher to ensure clarity in the photoresist film. Typically while working with halftones, the dot size should be set to 35 lines per inch minimum, and can be as high as 65 LPI depending on the size and clarity of the image.

LINE WEIGHT

The blast depth is limited to the width of the line. The minimum line width for blasting is **.012" (.305 mm)** on 5 mil film and **.022" (.558 mm)** on 10 mil. All lines must match or exceed the minimum line width.

Make sure that the centers of letters like A, B or O are not filled in and are large enough for the mask area to hold. For 5 mil product set type at a size of **9 pt or higher**. For 10 mil product set type at a size of **20 pt or higher**.

FOR MORE TIPS, TRICKS, BLOG POSTS AND VIDEOS TO UNLOCK YOUR SANDCARVING POTENTIAL, VISIT US AT IKONICSIMAGING.COM