

LINE ART

CorelDRAW

1. Artwork must be black and white. BLACK must be 100% BLACK
2. Ungroup artwork if grouped.
3. Select all artwork that needs to be inverted. Choose the selection tool, click and drag across all artwork. All artwork should be highlighted.
4. Choose "Effect" from Toolbar. "Transform", "Invert". (See figure A)
5. If image background is inverted to white you will need to change it separately to black. If artwork doesn't have a background, create one by drawing a box around the artwork (at least 1/4" around the complete image). Fill the box with 100% black. Place the box behind the image. Choose "Arrange", "Order", "To back".
6. Image will now be in negative.

Adobe Illustrator

1. Make sure image is 100% black and white.
2. Ungroup artwork.
3. Select all artwork. Choose "Select" then "All" (Short cut Ctrl+A).
4. Choose "Filter" from Toolbar. Choose "Colors", then "Invert Colors". (See figure B)
5. If image background is inverted to white you will need to change it separately to black. If artwork doesn't have a background, create one by drawing a box around the artwork (at least 1/4" around the complete image). Fill the box with 100% black. Place the box behind the image by selecting "Object", "Arrange", "Send to back".
6. Image is now a negative.



Line Art Positive



Line Art Negative

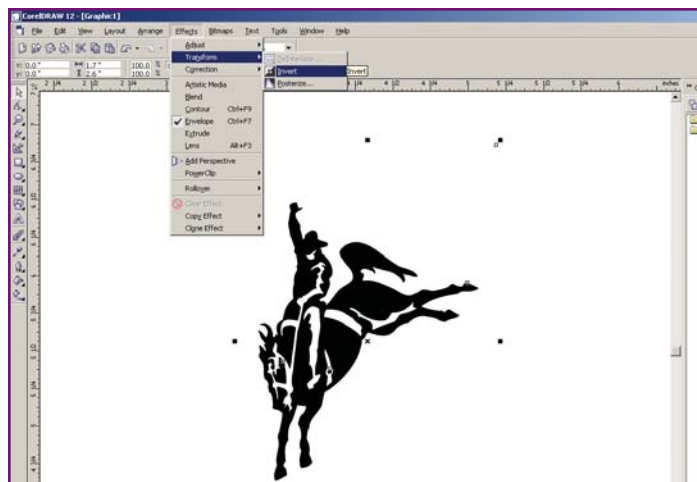


Figure A

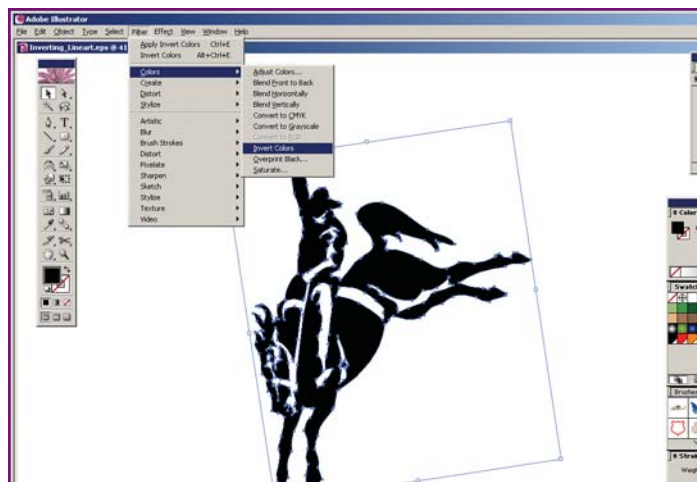


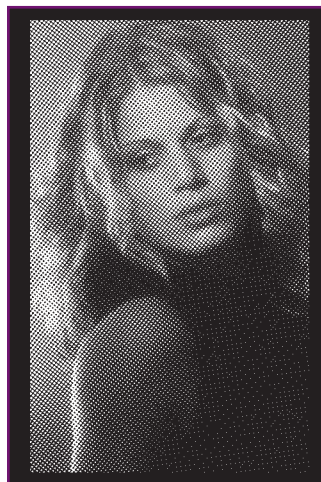
Figure B

HALFTONE

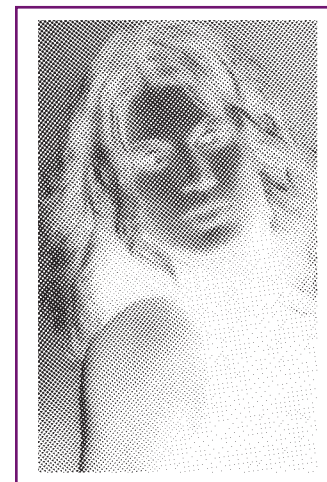
Corel PHOTO-PAINT

1. Scan image as text/line art.
2. Select "Image" from toolbar, "Transform", "Invert". (shortcut on PC Ctrl+I)
3. Add a 1/4" border around complete image. Choose "Image" "Paper Size". Add 1" to "New" both width and height. Change background color to BLACK. Click "OK". (See figure A)
4. Image is now a negative.

If the image is a photograph, it must be converted to a halftone before it can be used to make a photo resist. This can be accomplished using the Half-Wiz script for PHOTO-PAINT. Please call IKONICS Imaging for more information.



Halftone Positive



Halftone Negative

Adobe Photoshop

1. Open image. Make sure image is black and white only. If scanning image, scan artwork as text/line art.
2. Flatten layers. Choose "Layers" from Toolbar, "Flatten image".
3. Choose "Select" from toolbar, "All".
4. Select "Image" from toolbar, "Adjustment", then "Invert". (shortcut on PC Ctrl+I)(See figure B)
5. Image is now a negative.
6. For a 1/4" black border around image first make sure background color is black. Choose "Image", "Canvas Size", from "New Size" add 1" to both Width and Height. Click "OK".

If the image is a photograph, it must be converted to a halftone before it can be used to make a photo resist. Please see our separate halftone nstructions for this procedure.

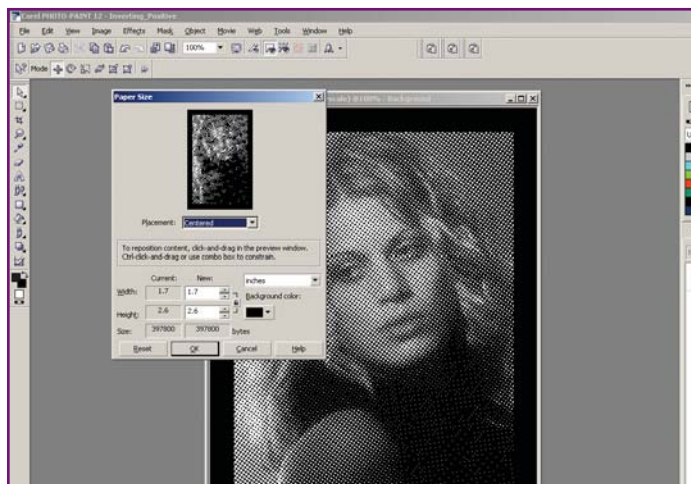


Figure A

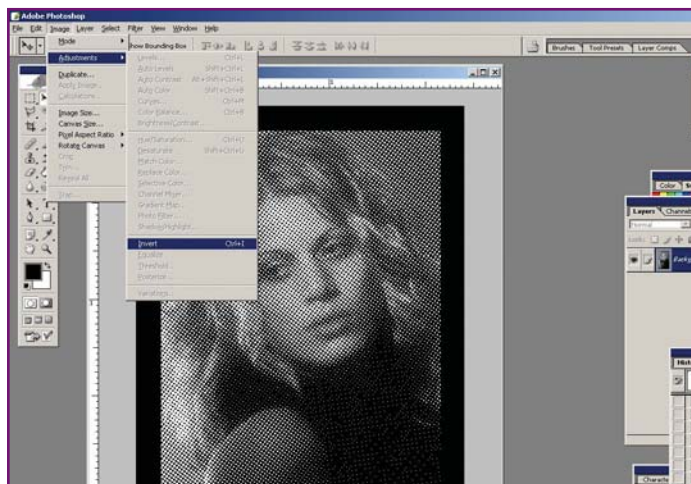


Figure B