



Original



Result



[Click to Download Half-Wiz](#)

## User Guide

### 1. Installation

- Open the "ADOBE PHOTOSHOP" folder
- Open the "PRESETS" folder
- Open the "ACTIONS" folder
- Drag the "HALFWIZ" file into the "ACTIONS" folder

### 2. Open an Existing File

- Launch Adobe Photoshop
- Click "FILE", and then select "OPEN".
- Navigate to where your file is, select the file, and click "OPEN"
- Click "OKAY"

### 3. Open the Actions Panel

- Click "WINDOW"
- Click "Actions" (see Fig. a)

### 4. Load Halfwiz Action file

- Open the Actions Panel drop menu
- Select "LOAD ACTIONS..." (see Fig. b1)
- Locate the Halfwiz action file (see Fig. b2)
- Click "LOAD" (see Fig. b3)

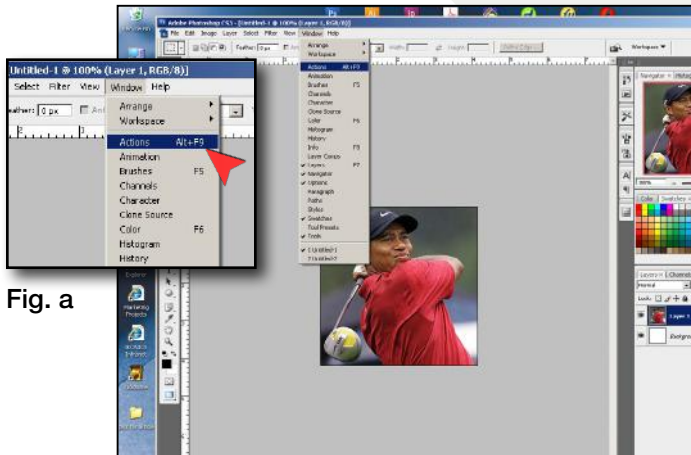


Fig. a

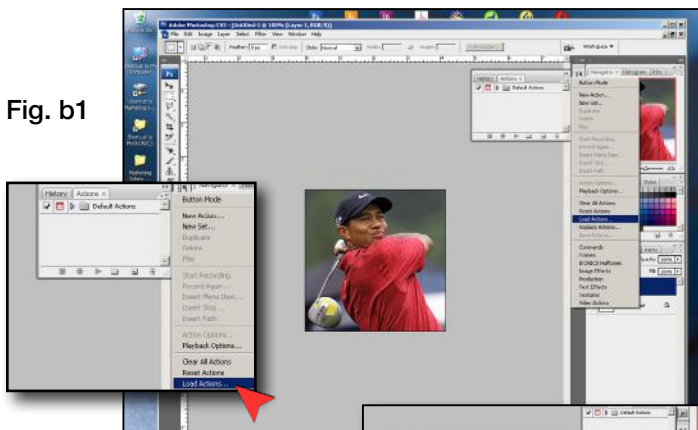


Fig. b1

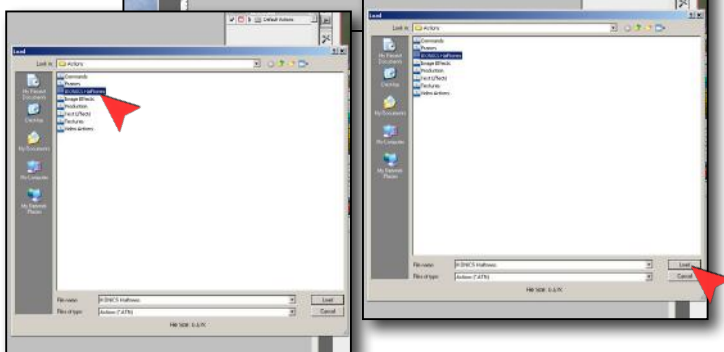
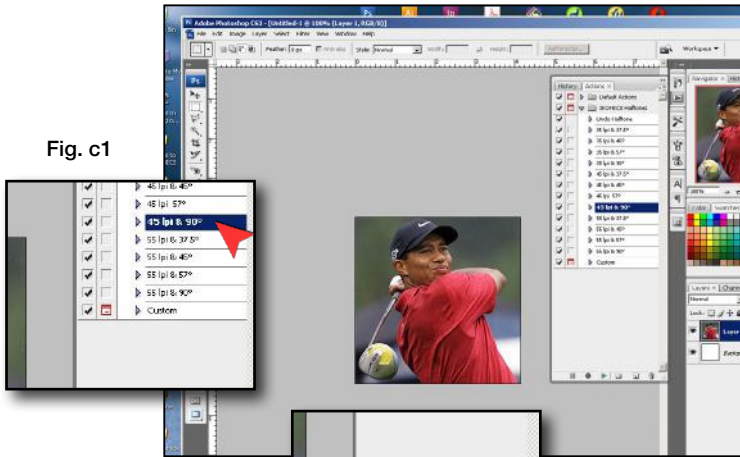


Fig. b2

Fig. b3

Fig. c1



## 5. Play Halfwiz\*

Open the "HALFWIZ" folder in the Actions Panel by clicking on the arrow left of the folder icon.

Select a preset (e.g. "35 LPI & 45°") or select "CUSTOM" (see Fig. c1)

Click the play button in the Actions Panel (see Fig. c2)

*\* Note: Using the Halfwiz "CUSTOM" setting requires advanced knowledge of Adobe Photoshop and is not covered in this user guide.*

Fig. c2

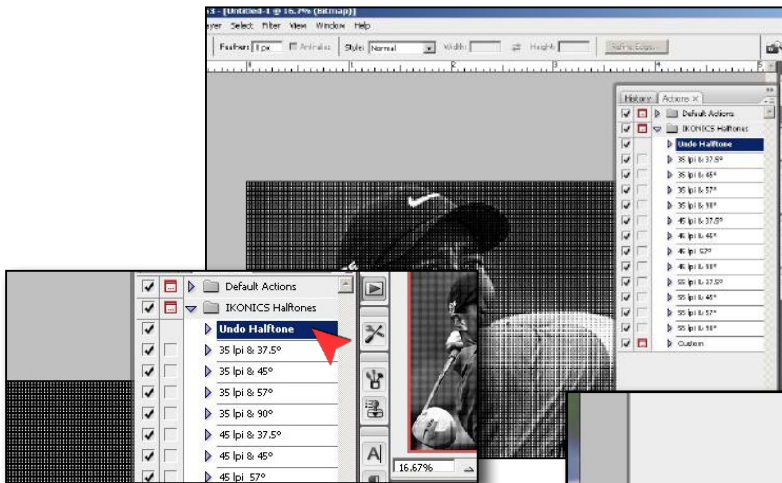
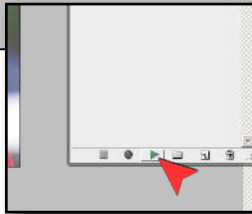


Fig. D1

## 6. UNDO Halfwiz (optional)

If the halftone result is not desirable:

Select "UNDO Halftone" from the Halfwiz folder in the Actions Panel (see Fig. d1)

Click the play button in the Actions Panel (see Fig. d2)

Repeat Step 5

Fig. D2

